



Flüssiggas-Anlagen

»Group 17«

Pressure Gauges

Pressure Gauges Valves

Thermometers

Accessories



Flüssiggas-Anlagen GmbH • Peiner Straße 217 • D - 38229 Salzgitter (Germany)
Tel. +49 (0) 53 41 / 86 97-0 • Fax +49 (0) 53 41 / 86 97-11
E-Mail: info@fas-uni.de • <http://www.fas-uni.de>



»17« Pressure Gauges - Pressure Gauge Valves
Thermometers - Accessories



Pressure Gauge with Bourdon tube to DIN, safety glass and pressure discharge outlet, measuring unit of copper base alloy, housing of steel or brass, gauging precision category 1.6 acc. to DIN

Order No.	Measuring	Connection	Housing-Ø	Fig.	Execution	Weight
17 001	0 - 4 bar	1/4" NPT male	63	1	- dry -	0,1
17 002	0 - 25 bar	1/4" NPT male	63	1	- dry -	0,1
17 004	0 - 4 bar	1/4" NPT male	63	2	- dry -	0,1
17 005	0 - 25 bar	1/4" NPT male	63	2	- dry -	0,1
17 044	0 - 25 bar	1/4" NPT male	63	1	- liquid-filled -	0,1
17 150	0 - 25 bar	1/4" NPT male	63	2	- liquid-filled -	0,1
17 003	0 - 25 bar	G 1/4" male	63	1	- dry -	0,1
17 009 ¹⁾	0 - 25 bar	G 1/4" male	63	1	- dry -	0,1
17 118 ²⁾	0 - 25 bar	G 1/4" male	63	2	- liquid filled -	0,1



¹⁾ red limit mark at 15,6 bar
²⁾ for control panel mounting

Pressure Gauge with Bourdon tube to DIN, safety glass and pressure discharge outlet, measuring unit of copper base alloy, housing of steel, stainless steel or plastic, gauging precision category 1.0 acc. to DIN

Order No.	Measuring	Connection	Housing-Ø	Fig.	Execution	Weight
17 011	0 - 4 bar	G 1/2" male	100	1	- dry -	0,6
17 012	0 - 25 bar	G 1/2" male	100	1	- dry -	0,6
17 013	0 - 25 bar	G 1/2" male	100	1	- liquid-filled -	1,2
17 014	0 - 40 bar	G 1/2" male	100	1	- dry -	0,6
17 015	0 - 40 bar	G 1/2" male	100	1	- liquid-filled -	1,2
17 021	0 - 25 bar	G 1/2" male	100	2	- dry -	0,6
17 022	0 - 25 bar	G 1/2" male	100	2	- liquid-filled -	1,2
17 023	0 - 40 bar	G 1/2" male	100	2	- dry -	0,6
17 024	0 - 40 bar	G 1/2" male	100	2	- liquid-filled -	1,2



Fig. 1
Radial Con.

Pressure Gauge with Bourdon tube to DIN, safety glass and pressure discharge outlet, housing and measuring of stainless steel, gauging precision category 1.0 acc. to DIN

Order No.	Measuring	Connection	Housing-Ø	Fig.	Execution	Weight
17 031	0 - 25 bar	G 1/2" male	100	1	- dry -	0,6
17 029	0 - 25 bar	G 1/2" male	100	1	- liquid-filled -	0,7
17 032	0 - 25 bar	G 1/2" male	100	2	- dry -	0,6
17 034	0 - 40 bar	G 1/2" male	100	1	- dry -	0,6
17 027	0 - 40 bar	G 1/2" male	100	1	- liquid-filled -	0,7
17 036	0 - 25 bar	G 1/2" male	160	1	- dry -	1,1
17 037	0 - 25 bar	G 1/2" male	160	2	- dry -	1,1

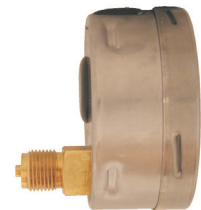


Fig. 2
Axial Con.

Precision Pressure Gauge with coil spring to DIN standards, housing of steel, measuring unit of copper base alloy, gauging precision category 1.6 acc. to DIN

Order No.	Measuring	Connection	Housing-Ø	Fig.	Weight
17 041	0 - 60 mbar	G 1/2" male	100	1	0,6
17 042	0 - 100 mbar	G 1/2" male	100	1	0,6
17 043	0 - 250 mbar	G 1/2" male	100	1	0,6
17 049	Extra charge - inspection certificate 3.1.B to EN 10 204 for Bourdon tube and trap				
17 050	Extra charge - red limit mark to customer specifications				

Further executions available on request.

Pressure Gauge Valves PN 40, with connection thread G 1/2" male / female, with inspection certificate 3.1.B to EN 10 204

Pressure Gauge Valve, DIN 16 270

Weight 0,6 kg

Order No.	Material
17 151	brass
17 152	steel
17 153	stainless steel

¹⁾ similar to DIN 16 271

Pressure Gauge Valve, DIN 16 271

Weight 0,7 kg

Order No.	Model	Material
17 155 ¹⁾	with test flange	brass
17 156	with test tap	brass
17 157 ¹⁾	with test flange	steel
17 158 ¹⁾	with test flange	stainless steel

²⁾ similar to DIN 16 272

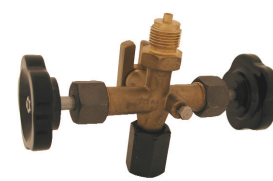
Pressure Gauge Valve, DIN 16 272

Weight 0,9 kg

Order No.	Model	Material
17 159 ²⁾	with test flange	brass
17 160	with test tap	brass
17 161 ²⁾	with test flange	steel
17 162 ²⁾	with test flange	stainless steel



model with test tap



model with test flange

Pressure Gauge Block of brass PN 25, Austrian execution FAS-No. 17 071 available on request.

Elbow Adapter, bend 90° PN 25, for pressure gauge G 1/4" female and 1/4" NPT male, brass, with test report 2.2 to EN 10 204

Order No.	Weight
17 074	0,05



Connecting adapter of stainless steel G 1/4" male to G 1/2" female in straight type or with 90° bend on request.

Kupferdichtung für Manometer

Bestell-Nr.	Ausführung
17 076	für Gewindeanschluss G 1/4"
17 077	für Gewindeanschluss G 1/2"

Anschweisstutzen PN 40, DIN 16282
G 1/2" links, aus Stahl

Bestell-Nr.	Ausführung	Gewicht
17 079	mit WAZ 2.2 nach EN 10 204	0,05
17 089	mit APZ 3.1.B nach EN 10 204	0,07



Spannmuffe PN 40, DIN 16283
G 1/2" rechts und links

Bestell-Nr.	Material	Gewicht	Ausführung
17 080	St	0,1	mit WAZ 2.2 nach EN 10 204
17 081	Ms	0,1	
17 084	Niro	0,1	mit APZ 3.1.B nach EN 10 204
17 184	Niro	0,1	

Überwurfmutter mit Anschweisstutzen
PN 40, DIN 16284, G 1/2", aus Stahl

Bestell-Nr.	Ausführung	Gewicht
17 083	mit WAZ 2.2 nach EN 10 204	0,1
17 183	mit APZ 3.1.B nach EN 10 204	0,1



Pressure Gauge with Contact Device PN 25, connection G 1/2" radial male, with adjustable inductive contact, housing and internal parts of stainless steel, ex-proof in connection with isolating amplifier Order No. 26 301 and 26 302 (230 V) or 26 303 and 26 304 (24 V), with test report 2.2 to EN 10 204

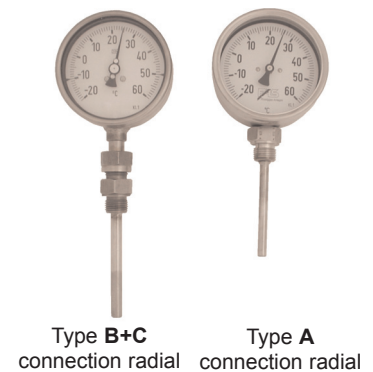
Order No.	Measuring Range	Contacts	Housing-Ø	Weight
17 130	0 - 6 bar	1	100	0,8
17 131	0 - 6 bar	2	100	0,8
17 132	0 - 16 bar	1	100	0,8
17 133	0 - 16 bar	2	100	0,8
17 134	0 - 25 bar	1	100	0,8
17 135	0 - 25 bar	2	100	0,8
17 136	0 - 16 bar	1	160	1,5
17 137	0 - 16 bar	2	160	1,5
17 138	0 - 25 bar	1	160	1,5
17 139	0 - 25 bar	2	160	1,5



Bimetal Dial Thermometer PN 25, connection G 1/2" male, stainless steel version, rustproof acidproof and waterproof, measuring range -20/+60°C, with test report 2.2 to EN 10 204

Type: **A** = with non-detachable stem adjoined to case
B = with union nut and detachable thermometer well
C = with union nut and detachable thermometer well with half-degree divisions (0,5°C), **suitable for calibration**

Order No.	Housing-Ø	Imm. Depth	Connection	Type	Execution	Weight
17 101	100	100	radial	A	- dry -	0,5
17 102	100	108	radial	B	- dry -	0,7
17 103	100	108	radial	B	- liquid-filled -	0,8
17 104	100	100	axial	A	- dry -	0,5
17 105	100	108	axial	B	- liquid-filled -	0,8
17 106	160	100	axial	A	- dry -	1,1
17 107	160	250	axial	A	- dry -	1,1
17 108	160	108	axial	B	- liquid-filled -	1,2
17 109	100	200	axial	A	- dry -	0,6
17 111	100	60	radial	A	- dry -	0,5
17 112	100	71	radial	B	- liquid-filled -	0,7
17 113	160	108	radial	B	- liquid-filled -	1,2
17 114	100	108	radial	C	- liquid-filled -	0,9



Other models and sizes are available on request.

Gas Pressure Thermometer with Extension Lead PN 25, liquid-filled, measuring range -20/+60°C, stainless steel version with mounting bracket, flexible¹⁾ extension lead 1.5 m with detachable thermometer well, union nut connection and detachable G 1/2" male, with test report 2.2 to EN 10 204

Order No.	Housing-Ø	Imm. Depth	Weight
17 122	100	100	1,25

Other models and sizes are available on request.

¹⁾The flexible extension enables a radial or axial connection.

