



Flüssiggas-Anlagen

»Group 10«

Connection Parts



Flüssiggas-Anlagen GmbH • Peiner Straße 217 • D - 38229 Salzgitter (Germany)
Tel. +49 (0) 53 41 / 86 97-0 • Fax +49 (0) 53 41 / 86 97-11
E-Mail: info@fas-uni.de • <http://www.fas-uni.de>



Adapter PN 25, with ACME-male thread and NPT-male thread, with test report 2.1 to EN 10 204

Order No.	RegO	A ACME	B NPT	Material	Weight (kg)
10 001	5763 D	1 1/4"	3/4"	brass	0,12
10 002*	A5765 C	1 3/4"	1/2"	steel	0,20
10 003	5765 D	1 3/4"	3/4"	brass	0,25
10 004*	A5765 D	1 3/4"	3/4"	steel	0,28
10 005	5765 E	1 3/4"	1"	brass	0,28
10 006*	A5765 E	1 3/4"	1"	steel	0,25
10 007	5765 F	1 3/4"	1 1/4"	brass	0,26
10 008*	A5765F	1 3/4"	1 1/4"	steel	0,32
10 009	5767 F	2 1/4"	1 1/4"	brass	0,54
10 010*	A5767 F	2 1/4"	1 1/4"	steel	0,43
10 011	5767 G	2 1/4"	1 1/2"	brass	0,54
10 012	5767 H	2 1/4"	2"	brass	0,54
10 013	5769 H	3 1/4"	2"	brass	1,27
10 014*	A5769 H	3 1/4"	2"	steel	1,10
10 015	FAS ¹⁾	3 1/4"	2 1/2"	brass	1,86
10 016	5769 K	3 1/4"	3"	brass	2,60
10 017	A5769 K	3 1/4"	3"	steel	2,54
10 018*	Fisher	4 1/4"	3"	steel	3,18



Adapter PN 25, with ACME-male thread and NPT-female thread, with test report 2.1 to EN 10 204

Order No.	RegO	A ACME	B NPT	Material	Weight (kg)
10 021	5764 C	1 3/4"	1/2"	brass	0,24
10 022	5764D	1 3/4"	3/4"	brass	0,21
10 023*	Fisher	1 3/4"	3/4"	steel	0,27
10 024	5764 E	1 3/4"	1"	brass	0,25
10 025	5766 E	2 1/4"	1"	brass	0,64
10 026	5766 F	2 1/4"	1 1/4"	brass	0,59
10 027	Fisher	2 1/4"	1 1/2"	brass	0,68
10 028	5768 G	3 1/4"	1 1/2"	brass	1,10
10 029	5768 H	3 1/4"	2"	brass	1,04
10 030*	A5768 H	3 1/4"	2"	steel	0,90
10 031	FAS ²⁾	3 1/4"	2 1/2"	brass	1,40
10 032	Fisher	4 1/4"	3"	brass	2,63



¹⁾ The RegO type 5769J is not available any longer. ²⁾ The RegO type 5768J is not available any longer.

Plug PN 40, ACME-thread, with chain and ring, with test report 2.1 to EN 10 204

Order No.	RegO	FAS	Connection ACME	Material	Weight (kg)
10 035	-	FAS	1 1/4"	brass	0,20
10 036	5765 PR	FAS	1 3/4"	brass	0,32
10 037	-	FAS	2 1/4"	brass	0,60
10 038	-	FAS	3 1/4"	brass	1,25
10 039*	-	-	4 1/4"	steel	2,90
10 043	10538 P	-	POL	brass, no chain	0,09



Plug, ACME-thread, plastic, with chain and ring, export design

Order No.	RegO	FAS	Connection ACME	Material	Weight (kg)
10 040	C5765 N	-	1 1/4"	-	0,04
10 041	C5767 N	-	2 1/4"	-	0,12
10 042	C5769 N	-	3 1/4"	-	0,23

**Anti-Seize Compound
Plastic-lead-seal**

Order No.	Contents
10 045	1,0 kg
10 046	2,4 kg

**Anti-Seize Copper Paste
Multipurpose assembly and dismantling
paste for srews, seals, etc.**

Order No.	Contents
10 047	1 kg

**Cold Workable Anti-Corrosion
Protection for Pipelines**

with DIN/DVGW registration no.

Adhesive Primer

Order No.	Contents
10 053	1 l

Anti-Leak Spray

Order No.	Contents
10 048	250 ml

Teflon Sealing Tape

Order No.	Dimensions	size
10 049	12 mm x 12 mm	0,1 mm

Testo-Jacketing 1.5mm, butyl-rubber-based

Order No.	Dimensions
10 051	30 mm x 10 m (DN 15 - 50)
10 054	50 mm x 10 m (DN 65 - 150)

Scotch Tape weatherproof, for flange connections

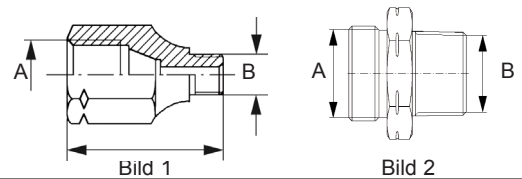
Order No.	Dimensions	Colour
10 068	19 mm x 50 m	weiß
10 069	30 mm x 50 m	weiß

Plastic Tape 0,4 mm, adhesive on one side

Order No.	Dimensions
10 052	30 mm x 10 m (DN 15 - 50)
10 055	50 mm x 10 m (DN 65 - 150)

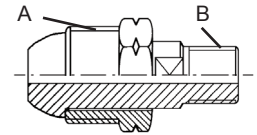
Adapter PN 25, brass, with test report 2.1 to EN 10 204

Order No.	Type	A	B	Fig.	Weight
10 056	5761A	POL female	1/4" NPT male	1	0,10
10 020	FAS	M 30x1,5 left male	1" NPT male	2	0,17
10 050	FAS	M 30x1,5 left male	G1" male	2	0,17
10 067	FAS	M 30x1,5 left male	3/4" NPT male	2	0,13
10 154	FAS	W 21,8x1/14" left male	1/2" NPT male	2	0,11



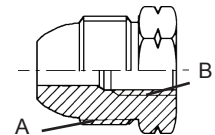
Swivel POL-Adapter PN 25, brass, with test report 2.1 to EN 10 204

Order No.	RegO	Fisher	FAS	A - male	B - female	Weight
10 057	970	M318	-	POL	1/4" NPT, straight	0,11
10 058	-	-	FAS	POL	1/4" NPT, angular	0,15



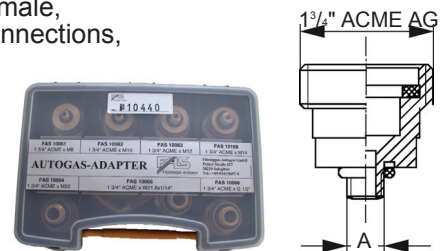
Fixed POL-Adapter PN 25, brass, with test report 2.1 to EN 10 204

Order No.	RegO	A - male	B - male	Weight
10 059	2906 A	POL	1/4" NPT	0,08
10 060	2906 G	POL	1/2" NPT	0,10



Adapter for Autogas Vehicles PN 25, brass, fuel adapter 1 3/4" ACME male, necessary for refuelling vehicles from foreign countries with different connections, with test report 2.1 to EN 10 204

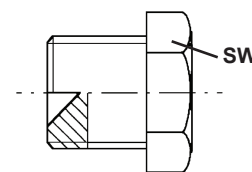
Order No.	A	Weight	Order No.	A	Weight
10 061	M 8	0,20	10 064	M22	0,20
10 062	M10	0,20	10 065	W21,8x1/14"	0,20
10 063	M12	0,20	10 066	G 1/2"	0,20
10 168	M14	0,20	10 440	Complete Set	2,10



Adapter for LPG nozzle type Neptuno T3/T4 (I) und DV-V10 (NL), and for other connection sizes available on request.

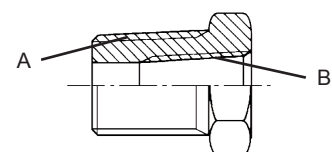
Plug PN 40, with NPT male thread, with square or hexagonal head, steel ASTM A105, with inspection certificate 3.1.B to EN 10 204

Order No.	NPT	Wrench Size	Weight
10 070	1/8"	14	0,01
10 071	1/4"	17	0,02
10 072	3/8"	19	0,05
10 073	1/2"	22	0,08
10 074	3/4"	27	0,12
10 075	1"	36	0,25
10 076	1 1/4"	46	0,40
10 077	1 1/2"	50	0,60
10 078	2"	65	1,10
10 079	2 1/2"	76	2,10
10 080	3"	89	2,70
10 081	4"	117	3,60



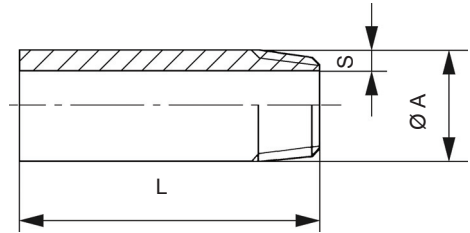
Reducer PN 40, with NPT female and male thread, steel ASTM A105, with inspection certificate 3.1.B to EN 10 204

Order No.	A	B	Wrench Size	Weight (kg)
	NPT-male	NPT-female		
10 082	1/2"	3/8"	22	0,05
10 083	3/8"	1/4"	19	0,03
10 084	1/2"	1/4"	22	0,06
10 097	3/4"	1/4"	27	0,09
10 096	3/4"	3/8"	30	0,09
10 085	3/4"	1/2"	27	0,05
10 086	1"	1/2"	32	0,20
10 087	1"	3/4"	36	0,15
10 088	1 1/4"	3/4"	46	0,30
10 089	1 1/4"	1"	46	0,30
10 090	1 1/2"	1"	50	0,45
10 091	1 1/2"	1 1/4"	50	0,25
10 092	2"	1 1/4"	65	0,60
10 093	2 1/2"	1 1/4"	76	1,30
10 094	3"	2"	89	1,90



Nipple PN 40, with NPT male thread, steel ASTM 106/B, with inspection certificate 3.1.B to EN 10 204

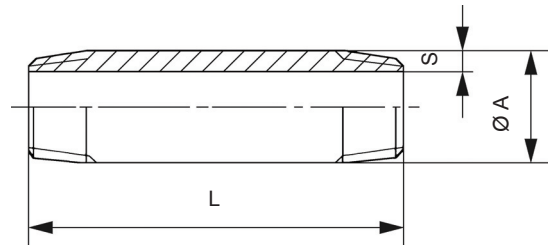
Order No.	NPT	A	S	L	Weight
10 101	1/4"	13,7	3,0	100	0,08
10 102	3/8"	17,1	3,2	100	0,10
10 103	1/2"	21,3	3,7	100	0,15
10 104	3/4"	26,7	3,9	100	0,20
10 105	1"	33,4	4,5	100	0,30
10 106	1 1/4"	42,2	4,9	100	0,40
10 107	1 1/2"	48,3	5,1	100	0,50
10 108	2"	60,3	5,5	100	0,68
10 109	2 1/2"	73,0	7,0	100	0,75
10 110	3"	88,9	7,6	100	1,40
10 111	4"	114,3	8,6	100	2,00



Nipple PN 40 in steel St 35.8 III

Double Nipple PN 40, with NPT male thread on both sides, of steel ASTM 106/B, with inspection certificate 3.1.B to EN 10 204

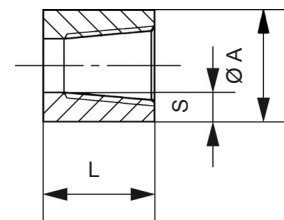
Order No.	NPT	A	S	L	Weight
10 115	1/4"	13,7	3,0	100	0,02
10 116	3/8"	17,1	3,2	100	0,10
10 117	1/2"	21,3	3,7	100	0,12
10 118	3/4"	26,7	3,9	100	0,20
10 119	1"	33,4	4,5	100	0,30
10 120	1 1/4"	42,2	4,9	100	0,40
10 121	1 1/2"	48,3	5,1	100	0,42
10 122	2"	60,3	5,5	100	0,70
10 123	2 1/2"	73,0	7,0	100	1,10
10 124	3"	88,9	7,6	100	1,10
10 125	4"	114,3	8,6	125	1,80



Double Nipple with hexagonal head reduced length and reduced double nipple with hexagonal head on request.

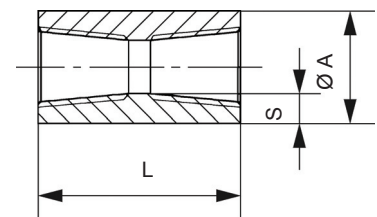
Half Coupling PN 40, with NPT female thread, steel ASTM 105, with inspection certificate 3.1.B to EN 10 204

Order No.	NPT	A	S	L	Weight
10 129	1/4"	19,0	4,0	17	0,01
10 130	3/8"	22,2	4,0	19	0,02
10 131	1/2"	28,5	5,0	24	0,10
10 132	3/4"	35,0	6,0	25	0,15
10 133	1"	44,5	8,5	30	0,20
10 134	1 1/4"	57,5	10,0	33	0,40
10 135	1 1/2"	63,5	10,5	40	0,62
10 136	2"	77,0	10,0	43	0,72
10 137	2 1/2"	92,0	12,5	46	0,90
10 138	3"	108,0	13,0	54	1,30
10 139	4"	140,0	12,0	60	3,20



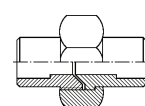
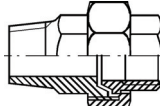
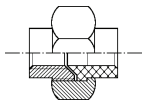
Full Coupling PN 40, with NPT female thread on both sides, steel ASTM 105, with inspection certificate 3.1.B to EN 10 204

Order No.	NPT	A	S	L	Weight
10 143	1/4"	19,0	4,0	35	0,03
10 144	3/8"	22,2	4,0	38	0,05
10 145	1/2"	28,5	5,0	48	0,12
10 146	3/4"	35,0	6,0	51	0,20
10 147	1"	44,5	8,0	60	0,40
10 148	1 1/4"	57,5	10,0	67	0,70
10 149	1 1/2"	63,5	11,0	79	0,95
10 150	2"	77,0	10,0	86	1,40
10 151	2 1/2"	92,0	12,5	92	1,90
10 152	3"	108,0	13,0	108	3,10
10 153	4"	140,0	12,0	121	6,40



Union PN 40, steel ASTM A105, with inspection certificate 3.1.B to EN 10 204

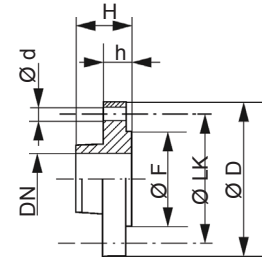
Order No.	NPT-thread female/female	Order No.	NPT-thread male/female	Order No.	DN	Weld Ends on both sides, O.D. (mm)	Weight (kg)
10 157	3/8"	10 164	1 1/4"	10 171	3/8"	21,3	0,28
10 158	1/2"	10 165	1/2"	10 172	1/2"	26,9	0,40
10 159	3/4"	10 166	3/4"	10 173	3/4"	33,7	0,50
10 160	1"	10 167	1"	10 174	1"	42,4	0,75
10 161	1 1/4"			10 175	1 1/4"	48,3	1,30
10 162	1 1/2"			10 176	1 1/2"	60,3	1,55
10 163	2"			10 177	2"	76,1	3,20



Elbow union with 90° bend, steel ASTM A105 with NPT-female and male threads available on request.

Welding Neck Flange PN 40, DIN 2635, steel C 22.8, with inspection certificate 3.1.B to EN 10 204

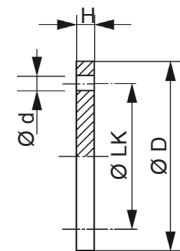
Order No.	DN	D	d	LK	F	H	h	Weight
10 201	15	95	14	65	45	38	16	0,75
10 202	20	105	14	75	58	40	18	1,06
10 203	25	115	14	85	68	40	18	1,29
10 204	32	140	18	100	78	42	18	1,88
10 205	40	150	18	110	88	45	18	2,33
10 206	50	165	18	125	102	48	20	2,82
10 207	65	185	18	145	122	52	22	3,74
10 208	80	200	18	160	138	58	24	4,75
10 209	100	235	23	190	162	65	24	6,52



Welding neck flange with tongue and groove to DIN 2512, with male and female faces to DIN 2513, lapped flanges, smooth-faced to DIN 2656, flanges in low temperature steel TT St 35 V, stainless steel and ANSI/ASA on request.

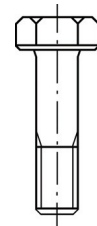
Blind Flange PN 40, DIN 2527, steel C 22.8, with inspection certificate 3.1.B to EN 10 204

Order No.	DN	D	d	LK	H	Weight
10 261	15	95	14	65	16	0,81
10 262	20	105	14	75	18	1,24
10 263	25	115	14	85	18	1,38
10 264	32	140	18	100	18	2,03
10 265	40	150	18	110	18	2,35
10 266	50	165	18	125	20	3,20
10 267	65	185	18	145	22	4,29
10 268	80	200	18	160	24	5,88
10 269	100	235	23	190	24	7,54



Hexagon Head Cap Screw DIN 931, galvanized, with quality stamp 5.6

Order No.	Dimensions	Order No.	Dimensions	Order No.	Dimensions
10 279	M 12 x 25	10 275	M 16 x 30	10 299	M 20 x 45
10 280	M 12 x 30	10 276	M 16 x 35	10 300	M 20 x 75
10 281	M 12 x 40	10 289	M 16 x 45	10 301	M 20 x 80
10 282	M 12 x 45	10 290	M 16 x 50	10 302	M 20 x 90
10 283	M 12 x 50	10 291	M 16 x 55	10 303	M 20 x 100
10 284	M 12 x 55	10 292	M 16 x 60	10 273	M 24 x 75
10 285	M 12 x 60	10 293	M 16 x 65	10 304	M 24 x 80
10 286	M 12 x 65	10 294	M 16 x 70	10 305	M 24 x 90
10 287	M 12 x 70	10 295	M 16 x 75	10 306	M 24 x 100
10 288	M 12 x 75	10 296	M 16 x 80	10 307	M 24 x 120
10 250	M 12 x 80	10 297	M 16 x 90	10 308	M 30 x 120
10 277	M 12 x 90	10 298	M 16 x 100	10 309	M 33 x 110
10 349	M 12 x 100	10 278	M 16 x 110		
10 189	M 12 x 110	10 252	M 16 x 160		

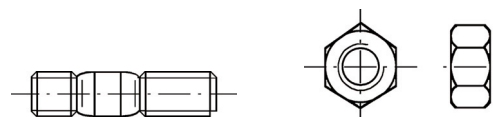


Stud DIN 939, galvanized, with quality stamp 5.6

Order No.	Dimensions	Order No.	Dimensions
10 311	M 12 x 20	10 325	M 16 x 55
10 312	M 12 x 30	10 326	M 16 x 60
10 313	M 12 x 35	10 327	M 16 x 65
10 314	M 12 x 40	10 328	M 16 x 70
10 315	M 12 x 45	10 329	M 16 x 75
10 316	M 12 x 50	10 330	M 16 x 80
10 317	M 12 x 55	10 331	M 16 x 85
10 318	M 12 x 60	10 332	M 16 x 95
10 319	M 12 x 65	10 333	M 16 x 100
10 320	M 12 x 70	10 334	M 16 x 110
10 321	M 16 x 35	10 335	M 16 x 115
10 322	M 16 x 40	10 336	M 16 x 120
10 323	M 16 x 45	10 337	M 16 x 150
10 324	M 16 x 50	10 338	M 16 x 200

Hexagon Nut DIN 934 galvanized, with quality stamp 5-2

Order No.	Dimension
10 341	M 12
10 342	M 16
10 343	M 20
10 344	M 24
10 345	M 30
10 347	M 33



Reducer PN 40, DIN 2616, steel St 35.8 I, with inspection certificate 3.1.B to EN 10 204

Order No. concentric - Fig. 1	Order No. eccentric - Fig. 2	Size DN	Pipe D / d	Weight (kg)
10 361	10 371	100 / 80	114,3 / 88,9	0,90
10 362	10 372	100 / 65	114,3 / 76,1	0,90
10 363	10 373	80 / 65	88,9 / 76,1	0,56
10 384	10 355	80 / 50	88,9 / 60,3	0,56
10 364	10 374	65 / 50	76,1 / 60,3	0,47
10 382	-	65 / 40	76,1 / 48,3	0,47
10 365	10 375	50 / 40	60,3 / 48,3	0,30
10 366	10 376	50 / 32	60,3 / 42,4	0,30
10 380	-	50 / 25	60,3 / 33,7	0,30
10 367	10 377	40 / 32	48,3 / 42,4	0,18
10 383	-	40 / 25	48,3 / 33,7	0,18
10 385	-	40 / 20	48,3 / 26,9	0,18
10 368	10 378	32 / 25	42,4 / 33,7	0,12
10 387	-	32 / 20	42,4 / 26,9	0,12
10 369	10 379	25 / 20	33,7 / 26,9	0,10
10 350	-	20 / 15	26,9 / 21,3	0,05

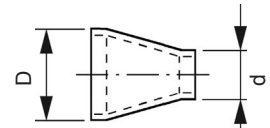


Fig. 1 - concentric

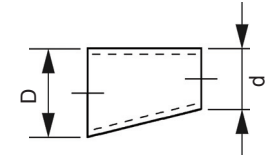
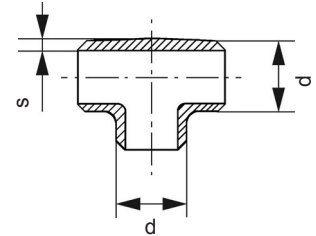


Fig. 2 - eccentric

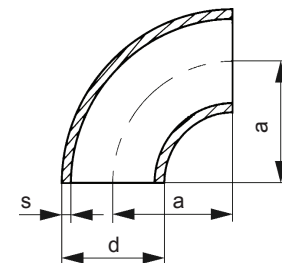
Tee PN 25, DIN 2615, steel St. 35.8 I, with inspection certificate 3.1.B to EN 10 204

Order No.	Size DN	Pipe O. D. d	Wall Thickness s	Weight (kg)
10 401	10	17,2	2,0	0,07
10 402	15	21,3	2,0	0,09
10 391	20	26,9	2,3	0,15
10 392	25	33,7	2,6	0,29
10 393	32	42,4	2,6	0,49
10 394	40	48,3	2,6	0,69
10 395	50	60,3	2,9	0,99
10 396	65	76,1	2,9	1,68
10 397	80	88,9	3,2	2,33
10 398	100	114,3	3,6	4,00



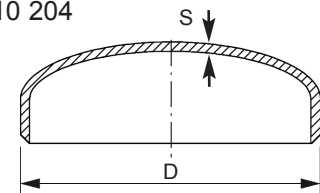
Pipe Bend PN 40, DIN 2605, with 90° bend, steel St. 35.8 I, with inspection certificate 3.1.B to EN 10 204

Order No.	Size DN	Pipe O.D. d	Wall Thickness s	Radius a	Weight (kg)
10 409	10	17,2	1,8	25	0,03
10 410	15	21,3	2,0	28	0,04
10 411	20	26,9	2,3	29	0,06
10 412	25	33,7	2,6	38	0,12
10 413	32	42,4	2,6	48	0,19
10 414	40	48,3	2,6	57	0,26
10 415	50	60,3	2,9	76	0,49
10 416	65	76,1	2,9	90	0,78
10 417	80	88,9	3,2	115	1,22
10 418	100	114,3	3,6	153	2,35



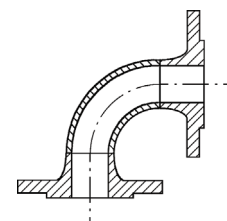
Cap PN 40, DIN 28011, steel RSt 37-2, with inspection certificate 3.1.B to EN 10 204

Order No.	DN	D	s	Weight
10 421	50	60,3	3	0,17
10 422	65	76,1	3	0,25
10 423	80	88,9	3	0,32
10 424	100	114,3	4	0,66
10 425	150	168,3	5	1,40



Pipe Bend with Flanges PN 40, for three-way valves, welded and primed, flanges steel C 22.8 to DIN 2635, pipe bend St 35.8 I to DIN 2605 with inspection certificate 3.1.B to EN 10 204 for material test, test report 2.2 to EN 10 204 for pressure and function test.

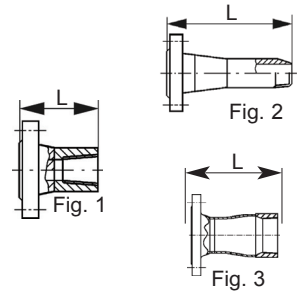
Order No.	DN	Weight	Order No.	DN
10 431	25	2,8	10 435	65
10 432	32	4,1	10 436	80
10 433	40	4,6	10 437	100
10 434	50	6,2	10 450	Extra charge for painting.



Other sizes, dimensions and qualities available on request.

Flange with Half Coupling PN 40, welded and primed, flange of steel C 22.8 to DIN 2635, half coupling of steel ASTM 105 with NPT female thread, with inspection certificate 3.1.B to EN 10 204 for material test, pressure and function test 2.2 to EN 10 204

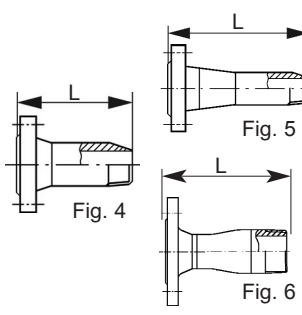
Order No.	Flange DN	HC NPT	Length L(mm)	Fig.	Weight (kg)	Order No.	Flange DN	HC NPT	Length L(mm)	Fig.	Weight (kg)
10 551	15	1/2"	65	1	0,9	10 550	50	1 1/4"	84	1	3,2
10 549	20	1/2"	67	1	1,2	10 560	50	1 1/2"	91	1	3,4
10 552	20	3/4"	68	1	1,2	10 561	50	2"	94	1	3,5
10 553	25	3/4"	68	1	1,4	10 562	50	2 1/2"	189	3	4,4
10 554	25	1"	76	1	1,5	10 569	50	3"	197	3	4,9
10 548	32	3/4"	121	2	2,1	10 563	65	2"	98	1	4,5
10 555	32	1"	75	1	2,1	10 564	65	2 1/2"	98	1	4,8
10 556	32	1 1/4"	78	1	2,3	10 565	65	3"	211	3	6,2
10 547	40	1"	144	2	2,8	10 566	80	2"	196	2	6,1
10 557	40	1 1/4"	81	1	2,6	10 567	80	2 1/2"	103	1	5,9
10 558	40	1 1/2"	88	1	2,8	10 568	80	3"	217	3	7,2
10 559	40	2"	180	3	3,4						
10 450											



ANSI flanges with half coupling available on request.

Flange with Nipple PN 40, welded and primed, flanges of steel C 22.8 to DIN 2635, nipple of steel ASTM 106/B with NPT male thread, with inspection certificate 3.1.B to EN 10 204 for the material, pressure and function test 2.2 to EN 10 204

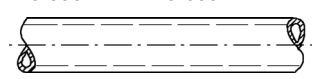
Order No.	Flange DN	Nipple NPT	Length L(mm)	Fig.	Weight (kg)	Order No.	Flange DN	Nipple NPT	Length L(mm)	Fig.	Weight (kg)
10 571	15	1/2"	140	4	1,0	10 588	50	1 1/4"	231	5	3,6
10 572	20	3/4"	105	4	1,3	10 580	50	1 1/2"	229	5	3,6
10 573	25	3/4"	165	5	1,6	10 581	50	2"	150	4	3,8
10 574	25	1"	105	4	1,7	10 582	50	2 1/2"	194	6	4,3
10 575	32	1"	200	5	2,4	10 583	65	2"	247	5	4,8
10 576	32	1 1/4"	95	4	2,3	10 584	65	2 1/2"	155	4	4,6
10 570	32	1 1/2"	213	6	2,5	10 585	65	3"	198	6	5,7
10 577	40	1 1/4"	170	5	2,7	10 589	80	2"	253	5	6,0
10 578	40	1 1/2"	146	4	2,9	10 586	80	2 1/2"	253	5	6,5
10 579	40	2"	179	6	3,2	10 587	80	3"	160	4	6,2
10 521	50	1"	180	5	3,4						
10 450											



ANSI flanges with nipple available on request.

Seamless Steel Pipe PN 40, to DIN 2448, steel St 35.8 I to DIN 17175, for underground installation with plastic coating to DIN 30 670/N, with inspection certificate 3.1.B to EN 10 204

Order No.	Order No.	Size DN	Dimensions	Order No.	Order No.	Size DN	Dimensions
		bare				bare	
10 591	10 601	15	21,3 x 2,0 mm	10 597	10 607	65	76,1 x 2,9 mm
10 592	10 602	20	26,9 x 2,3 mm	10 598	10 608	80	88,9 x 3,2 mm
10 593	10 603	25	33,7 x 2,6 mm	10 599	10 609	100	114,3 x 3,6 mm
10 594	10 604	32	42,4 x 2,6 mm				
10 595	10 605	40	48,3 x 2,6 mm				
10 596	10 606	50	60,3 x 2,9 mm				



Precision Steel Pipe PN 40, galvanized, to DIN 2391 with inspection certificate 3.1.B to EN 10 204

Order No.	Dimensions	Order No.	Dimensions
10 620	6 x 1,5 mm	10 626	22 x 2,0 mm
10 621	8 x 1,5 mm	10 627	28 x 2,0 mm
10 622	10 x 1,5 mm		
10 623	12 x 1,5 mm		
10 624	15 x 1,5 mm		
10 625	18 x 1,5 mm		

Pipe Insulator PN 25, to DIN 3389 tested by DVGW

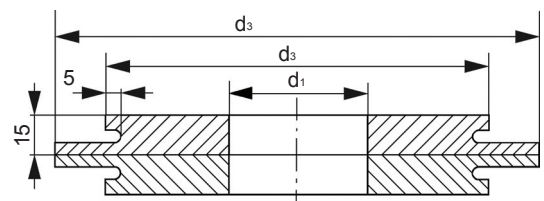
For the electrical separation of two pipe sections. Connection: compression fitting in both sides

Order No.	Dimensions	Weight
10761	RVS 12 x RVS 12	0,25
10762	RVS 15 x RVS 15	0,33
10763	RVS 18 x RVS 18	0,41
10749	RVS 22 x RVS 22	0,49



Welding Ring Seal PN 40, for DIN flanges, profile A 22, made of steel H II (one welding ring seal consists of 2 welding rings), with inspection certificate 3.1.B to EN 10 204

Order No.	Size DN	Dimensions		
		d ₁	d ₂	d ₃
10 691	15	17,3	32	46
10 692	20	22,3	38	58
10 693	25	28,5	46	66
10 694	32	37,2	55	75
10 695	40	43,1	60	80
10 696	50	54,5	75	95
10 697	65	70,3	90	110
10 698	80	82,5	105	125
10 699	100	107,1	125	145
10 700	125	131,7	150	170
10 690	150	159,3	178	198

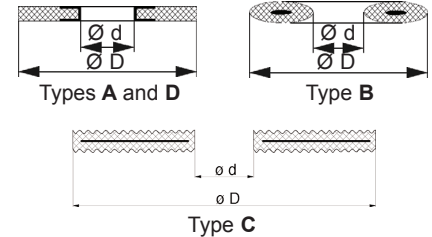


Other constructions and materials available on request.

Seal PN 40, LPG-proof, dimensions to DIN 2690 for flanges with smooth sealing surface, asbestos-free

- Type: **A** = universal high-pressure seal with inner rim of galvanized soft iron, **2 mm thick**
 Type: **B** = soft seal of Perbunan with steel insert, DIN-DVGW-approved, reusable, **5 mm thick**
 Type: **C** = graphite high-pressure seal with insert of stainless steel foil, corrugated, FIRE SAFE to BS 6755, max. 650°C, with inner rim of stainless steel, **2 mm thick**
 Type: **D** = special high-pressure seal, FIRE SAFE to BS 5146, max. 650°C, with inner rim of galvanized soft iron, **2 mm thick**

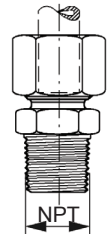
Order No.	Order No.	Order No.	Order No.	Size	Dimensions	
Type A	Type B	Type C	Type D	DN	D	d
10 641	10 651	10 941	10 991	15	50	22
10 642	10 652	10 942	10 992	20	60	27
10 643	10 653	10 943	10 993	25	70	34
10 644	10 654	10 944	10 994	32	82	43
10 645	10 655	10 945	10 995	40	92	48
10 646	10 656	10 946	10 996	50	107	60
10 647	10 657	10 947	10 997	65	127	76
10 648	10 658	10 948	10 998	80	142	89
10 649	10 659	10 949	10 999	100	168	114
10 650	10 660	10 940	10 990	125	195	141



Seals for other flange types in addition to dome cover seals are available on request.

Straight Pipe Union PN 40, with NPT male thread, galvanized

Order No.	NPT	Pipe O. D.	Weight (kg)	Order No.	NPT	Pipe O. D.	Weight (kg)
10 701	1/4"	8 mm	0,04	10 708	1/2"	18 mm	0,13
10 702	1/4"	10 mm	0,05	10 709	1/2"	22 mm	0,16
10 703	1/4"	12 mm	0,06	10 710	3/4"	18 mm	0,15
10 704	3/8"	10 mm	0,06	10 711	3/4"	22 mm	0,18
10 705	3/8"	12 mm	0,07	10 712	1"	28 mm	0,21
10 706	1/2"	12 mm	0,08				
10 707	1/2"	15 mm	0,11				



Elbow and tee unions available on request.

Compensator, max. operating pressure 20 bar, with flange connection to DIN 2635, test pressure 37,5 bar, theoretical bursting pressure 100 bar, suitable for pipelines, machinery and for installation of pumps with test report 2.2 to EN 10 204

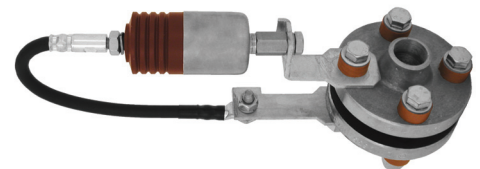
Order No.	DN	Weight	Order No.	DN	Weight
10 751	25	2,00	10 755	65	6,00
10 752	32	3,20	10 756	80	7,50
10 753	40	3,40	10 757	100	10,15
10 754	50	4,75			



Insulating Flange Set PN 40, electrically non-conductive flange connection

pre-assembled in factory and dielectrically tested to 5000V. Flanges must be dismantled before installation in pipelines. Temperature range -10°C bis +50°C, with inspection certificate 3.1.B to EN 10 204

Order No.	Size	Pipe Connection	Length	Weight
	DN	D x s	(mm)	(kg)
10 770	15	21,3 x 2,0	88	1,9
10 771	20	26,9 x 2,3	97	2,2
10 772	25	33,7 x 2,6	97	3,5
10 773	32	42,4 x 2,6	100	5,0
10 774	40	48,3 x 2,6	108	6,0
10 775	50	60,3 x 2,9	114	7,0
10 776	65	76,1 x 2,9	122	10,0
10 777	80	88,9 x 3,2	133	12,3
10 778	100	114,3 x 3,6	148	17,5



Insulating flange set with discharger

Discharger explosion-proof, for bridging the gap between insulating flanges or insulators in hazardous areas, complete with connecting cable l=200m and bracket, with PTB-test certificate

Order No.	Connecting Brackets for Screws	Weight
10 781	M 12	1,1
10 782	M 16	1,1
10 783	M 20	1,2
10 784	M 24	1,2

Other sizes available on request.

High-Pressure LPG Hose PN 25, type FAS, LPG-proof to EN 1762 (DIN 4815 Part 3), cutted to required length, operating pressure 25 bar, temperature range: -30°C bis +70°C, electrically conductive, with test report 2.2 to EN 10 204

Order No.	DN	External Diameter (mm)
10 801	10	20
10 800	13	23
10 802	19	31
10 803	25	37
10 804	32	44
10 805	50	66
10 806	80	93

} with DIN-DVGW-approval



High-pressure hose for ammonia and other sizes available on request.

Complete Hose Connection PN 25, hose nipple of steel with clamp of aluminium and screws, welded, primed and painted or galvanized, with inspection certificate 3.1.B to EN 10 204 for material (steel components), pressure and function test 2.2 to EN 10 204

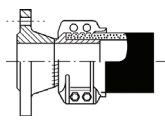


Fig. 1

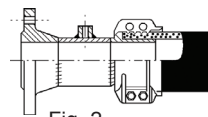


Fig. 2

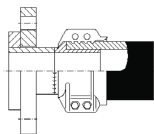


Fig. 3

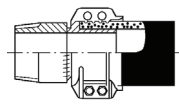


Fig. 4

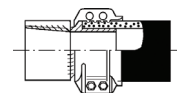


Fig. 5

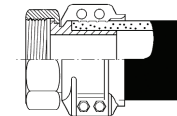


Fig. 6

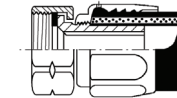


Fig. 7

- Fig. 1: Flange PN 40, DIN 2635
- Fig. 2: Flange PN 40, DIN 2635 and half coupling PN 40, 1/2" NPT for relief valve
- Fig. 3: lapped flange PN 40, DIN 2656
- Fig. 4: Nipple PN 40, mit NPT-thread
- Fig. 5: Half coupling PN 40, mit NPT-thread
- Fig. 6: Union nut (brass), flat seal
- Fig. 7: Union nut (brass), flat seal

Order No.	Connection/LPG	Fig.	Order No.	Connection/LPG	Fig.	Order No.	Connection/LPG	Fig.
10 811	DN 20/19	1	10 888	1/2" NPT/13	like 4	10 855	1" NPT/25 R	5
10 812	DN 25/19 R	1	10 831 ¹⁾	1/2" NPT/19	4	10 844 ¹⁾	1" NPT/32 R	5
10 813	DN 25/25	1	10 832 ¹⁾	3/4" NPT/19	4	10 856	1 1/4" NPT/25	5
10 814	DN 25/32	1	10 833	3/4" NPT/25	4	10 857	1 1/4" NPT/32 R	5
10 815	DN 32/25 R	1	10 834	1" NPT/19 R	4	10 858	1 1/2" NPT/32 R	5
10 816	DN 32/32	1	10 835 ¹⁾	1" NPT/25	4	10 859	2" NPT/50	5
10 817	DN 40/32 R	1	10 836 ¹⁾	1" NPT/32	4	10 860	2" NPT/80	5
10 818	DN 40/50	1	10 837 ¹⁾	1 1/4" NPT/32	4	10 861	2 1/2" NPT/50 R	5
10 819	DN 50/32 R	1	10 838	1 1/2" NPT/32	4	10 862	2 1/2" NPT/80	5
10 820	DN 50/50	1	10 839 ¹⁾	2" NPT/50	4	10 863	3" NPT/50 R	5
10 821	DN 50/50	2	10 840	2" NPT/80 R	4	10 864	3" NPT/80 R	5
10 822	DN 50/50	3	10 841	2 1/2" NPT/50 R	4	10 869	3/4" NPT IG/10	like 5
10 823	DN 65/50 R	1	10 842	3" NPT/50 R	4	10 873	G 1 1/4"/25	6
10 824	DN 65/80	1	10 843 ¹⁾	3" NPT/80	4	10 865	G 1 1/4"/32	6
10 825	DN 80/50 R	1	10 851	1/2" NPT/19	5	10 850	M 65 x 2/50	like 6
10 826	DN 80/80	1	10 852	3/4" NPT/19 R	5	10 849	M 100 x 2/80	like 6
10 827	DN 80/80	2	10 853 ¹⁾	3/4" NPT/25	5	10 866	M 30 x 1,5 lks/19	7
10 828	DN 80/80	3	10 854	1" NPT/19 R	5	10 867	W 21,8 x 1/4" lks/10	7
						10 886	G 1/2"/13	7

¹⁾One-piece turned part without welding, galvanized

Complete High-Pressure Hose Pipe, fully assembled

When placing your order please advise the diameter and length of hose required in addition to the hose connections required for both ends. All hoses delivered by us complete with connections are tested for leakage at a hydrostatic pressure of 37,5 bar and tested to ensure that all fittings are securely installed. A test certificate to TRG 402 is included.

Assembly of hose connections including pressure test and test certificate

Order No.	
10 870	LPG 10 to 13
10 871	LPG 19 to 32
10 872	LPG 50 to 80

In order to guarantee safe operation and to guard against leakage, hose pipes must be tested continuously. We can perform these tests for you at any time!