



Flüssiggas-Anlagen

»Group 26«

Threephase Motors

Electrical Components

Gas Leakage Detectors



Flüssiggas-Anlagen GmbH • Peiner Straße 217 • D - 38229 Salzgitter (Germany)

Tel. +49 (0) 53 41 / 86 97-0 • Fax +49 (0) 53 41 / 86 97-11

E-Mail: info@fas-uni.de • <http://www.fas-uni.de>



Threephase Motor with cage rotor, increased safety category EEx e II T 3, protection class IP 54, construction type B 3, with PTB test certificate

Voltage 230/400 V 50 Hz, motor speed 1500 RPM

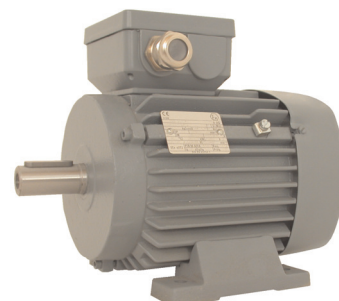
Order No.	Power kW	Model Size	Weight (kg)
26 001	0,75	80	9,8
26 002	1,00	90 S	12,7
26 003	1,35	90 L	16,0
26 004	2,00	100 L	22,0
26 005	2,50	100 L	24,0
26 006	3,60	112 M	29,0

Voltage 400/690 V 50 Hz, motor speed 1500 RPM

Order No.	Power kW	Model Size	Weight (kg)
26 007	5,00	132 S	39,0
26 008	6,80	132 M	53,0
26 009	10,00	160 M	73,0
26 010	13,50	160 L	90,0
26 011	15,00	180 M	165,0
26 012	17,50	180 L	180,0
26 013	24,00	200 L	240,0
26 014	30,00	225 S	300,0
26 015	36,00	225 M	330,0

Voltage 400/690 V 50 Hz, motor speed 750 RPM

Order No.	Power kW	Model Size	Weight (kg)
26 021	4,80	160 M	67,0
26 022	9,70	180 L	175,0
26 023	16,50	225 S	300,0



Motors with other capacities and special models e.g. flame-proof versions or single phase ex-proof motors are available on request.

Threephase Helical Geared Motor with cage rotor, increased safety category EEx e II T 3, protection class IP 54, voltage 400/690 V, 50 Hz, with PTB test certificate

Order No.	Power kW	RPM	Model Size	Weight (kg)
26 031	5,0	560	132 S	88,0
26 032	10,0	580	160 M	145,0
26 035	13,5	580	160 L	165,0
26 033	15,0	580	180 M	203,0
26 034	17,5	580	180 L	214,0



Manual Motor Starter for direct-on-line starting and overload protection of explosion-proof motors, plastic enclosure, protection class IP 65, explosion-proof to E Ex de II C, with PTB test certificate

Order No.	Setting Range	Weight	Order No.	Setting Range	Weight
26 051	1,6 - 2,5 A	3,5	26 057	9,0 - 12,5 A	3,5
26 052	2,5 - 4,0 A	3,5	26 058	12,5 - 16,0 A	4,4
26 054	4,0 - 6,3 A	3,5	26 059	16,0 - 20,0 A	4,4
26 056	6,3 - 9,0 A	3,5			



Control Button in insulating box, explosion-proof to EEx de II C T6, for controlling electrical drives, protection class IP 64, with PTB test certificate

Order No.	Execution	Fig.
26 041	Emergency stop button with mushroom button actuator	1
26 042	ON-OFF push-button	2
26 043	ON-OFF push-button with indicating lamp	3
26 044	Emergency stop button with mushroom key-operated button actuator	4



Control Button without explosion protection, IP 64

Order No.	Execution	Fig. like 1
26 046	Emergency stop button with mushroom button actuator	

Fig. 1 Fig. 2 Fig. 3 Fig. 4

»26« Threephase Motors - Electrical Components Gas Leakage Detectors

Isolating Switch Amplifier for the transmission of signals from hazardous areas, for installation in electrical control cubicle, intrinsically safe signal circuit, with possibility for connection of preset resistors for monitoring cable breaks and short circuits, with PTB test certificate

Type: **A** = 1 channel / 1 change-over contact
Type: **B** = 2 channel / 2 change-over contacts

Order No.	Order No.	Type	Voltage
Type A	Type B		
26 301	26 302	KFA6	230 V/50 Hz
26 303	26 304	KFD2	24 V-DC



Fail-safe isolating switch amplifier, tested by TÜV
26 305 - KHA6-SH 230 V/50 Hz

Temperature Monitoring System for magnetic coupling

Limit switch for installation in electrical control cubicle, intrinsically safe signal circuit, for attachment of resistance thermometer, potential-free relay output with 2 change-over contacts, power supply 230 V / 50 Hz, **with PTB test certificate**

Resistance Thermometer PT 100, stainless steel probe

Order No.	Execution
26 309	Resistance thermometer , G 1/4" male
26 311	Limit switch , EEx ia IIC
26 308	Adapter for SIHI-pump , M12 x 1 male - G 1/4" female, length =70 mm, stainless steel



PT 100



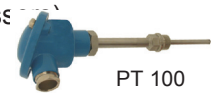
Limit Switch

Temperature Measuring and Monitoring System (e.g. for vapour outlet in compress

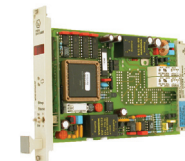
Measuring Amplifier with 2 adjustable limit outputs and temperature indication on front display, intrinsically safe input circuit for PT 100, DIN resistors in 2-, 3- or 4-wire circuit, potential-free outputs each with 1 change-over contact, operating voltage 24 V DC, installation in 19" rack or electrical control cubicle, **with PTB test certificate**

Resistance Thermometer PT 100, G 1/2" male connection, stainless steel probe

Order No.	Execution
26 312	Resistance thermometer , PT 100
26 313	Measuring amplifier , with relay output
26 314	Measuring amplifier , with additional current / voltage output
26 315	Enclosure for electrical control cubicle for holding pc board
26 316	Welding thermometer well , connection M18 x 1,5 female with inspection certificate 3.1.B to EN 10 204
26 317	Multipole connector , connection pins 0,8 x 2,4 mm



PT 100



Measuring Amplifier



Thermometer Well

Level Limit Switch for liquids, electronic, operating temperature -40°C to +120°C, suitable for use in hazardous areas, Zone 0, with PTB test certificate

Order No.	Execution
26 135	Level Sensor FTL 50 , PN 25, connection 1" NPT male, sensor length 66,5 mm
26 136	Liquid Level FTL 320 , with intrinsically safe electrical input and relay output (working contact), 1 channel, power supply 230 V AC, for installation in electrical control box

Sensors with other connections, e.g. DIN-flanges are available on request.



Sensor



Liquid Level Transducer

Horn with powerful electromagnetic system, 230 V / 50 Hz, signal transmitter for use in damp areas or outdoors

Order No.	Execution	Weight
26 061	without explosion protection	0,9
26 062	with explosion protection, with PTB test certificate	1,0



Beacon visual warning device, 230 V/50 Hz, signal transmitter for use in moist areas or outdoors

Order No.	Execution	Weight
26 151	without explosion protection	0,5
26 152	with explosion protection, with PTB test certificate	1,3



Electric Torch for hazardous areas, [EEx ia] e II C T6, protection class IP 66, for alkaline batteries type R 20

Order No.	Lamp	Qty. of Batteries ¹⁾	Weight
26 161	2,5 V/0,3 A	2 pcs	0,20
26 162	3,7 V/0,3 A	3 pcs	0,25



¹⁾ Batteries are not included in scope of supply.

Portable Gas Indicator for LPG with two-digit, digital LCD display

For detecting explosive propane / butane concentrations in the air, with built-in electrical pump, rechargeable Ni-Cd battery, battery capacity approx. 200 standard measuring cycles, explosion proof Ex s II C T3

Measuring Range: 0 - 100 % LEL (lowest explosive level) Propane
 Dimensions: B = 72 mm, T = 33 mm, H = 170 mm
 Weight: 0,5 kg

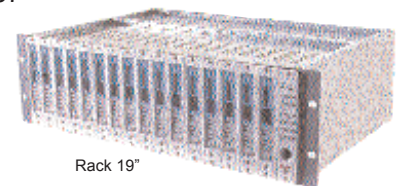
Order No.	Execution
26 201	Gas indicator
26 202	Carrying case
26 203	Battery charger 230 V / 50 Hz
26 204	Telescopic probe
26 205	Testing hose l = 2 m
26 206	Battery charger for motor vehicles 12 V / 24 V -DC



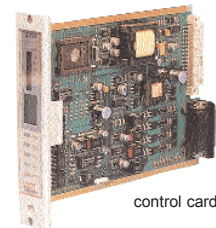
Gas Detection System for LPG for stationary applications, System 57

For systems with max. 16 control cards in 19" rack, for monitoring hazardous areas in which an explosion is likely to occur due to existing flammable gas / air mixtures. With analogue and digital display, 3 adjustable alarm levels, standard setting 20% / 40% LEL, 5 LEDs for gas alarm A1, A2, A3, error and alarm lock, peak value storage, push-button for alarm stop, auxiliary voltage with 24 V-DC, interface card with relay for total and group alarm, with functional expertising certificate according to EN 50 054/57 for safety monitoring to Ex-RL

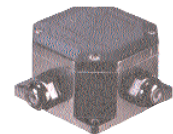
Order No.	Execution
26 243	Rack 19" for installation in switch cabinet for 8 control cards ,
26 244	Rack 19" for installation in switch cabinet for 16 control cards ,
26 241	Wall mounting cabinet , protection class IP 54, for 8 control cards
26 242	Wall mounting cabinet , protection class IP 54, for 16 control cards
26 246	Power supply 230 V 50 Hz (AC) / 24 V (DC)
26 249	Control card , 1-channel, for single alarm
26 247	Control card , 1-channel, for single or group alarm
26 248	Control card , 1-channel, for group alarm
26 250	Gas detection sensor type Sense Point, complete with terminal box in protection class Ex e, with weather protection for outside operation , with ATEX-approval
26 251	Gas detection sensor type Signal Point, complete with terminal box in protection class Ex e, for inside operation in buildings , with ATEX-approval



Rack 19"



control card



Gas detection sensor, type Sense Point

Please indicate the numbers of control cards and gas detection sensors when placing your order. Further executions are available on request.

Gas Detection System for LPG for stationary applications, type BIAS 4

For systems with max. 4 control cards for monitoring hazardous areas in which an explosion is likely to occur due to existing flammable gas / air mixtures, plastic housing for metering and analysing electronics for installation on a wall or in a switch cabinet, with digital display of the measuring value, 2 total alarm relays for 1. and 2. alarm level and one separate alarm relay, standard setting 20% / 40% LEL, voltage 230 V 50 Hz (AC) or 24 V (DC) with functional expertising certificate acc. EN 50 054/57 for safety monitoring to Ex-RL

Order No.	Execution
26 231	Measuring and analysing electronics in plastic housing for one control card
26 234	Measuring and analysing electronics in plastic housing for 2 control cards
26 235	Measuring and analysing electronics in plastic housing for 3 control cards
26 236	Measuring and analysing electronics in plastic housing for 4 control cards
26 250	Gas detection sensor type Sense Point, complete with terminal box in protection class Ex e, with weather protection for outside installation , with ATEX-approval
26 251	Gas detection sensor type Signal Point, complete with terminal box in protection class Ex e, for operation within buildings , with ATEX-approval



Measuring and analysing electronics



Gas detection sensor type Signal Point

Please indicate the numbers of control cards and gas detection sensors when placing your order. Further executions are available on request.